

Forests and Forestry of Croatia



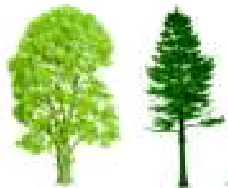


Croatia is an Adriatic and a Central European country.

It is situated in the three-border area of the Pannonian, Alpine-Adriatic and Adriatic-Mediterranean impacts

Basic natural geographic units:

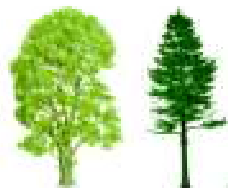
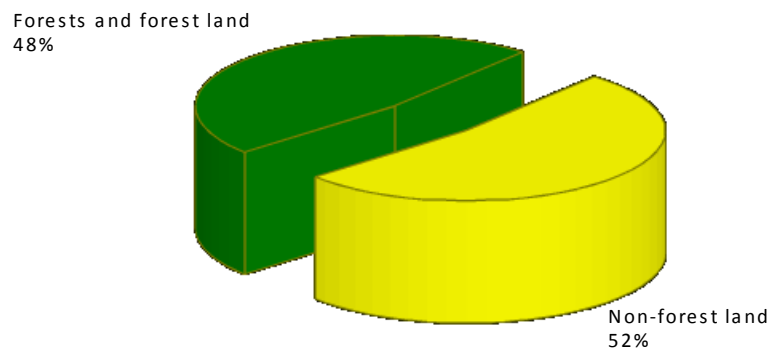
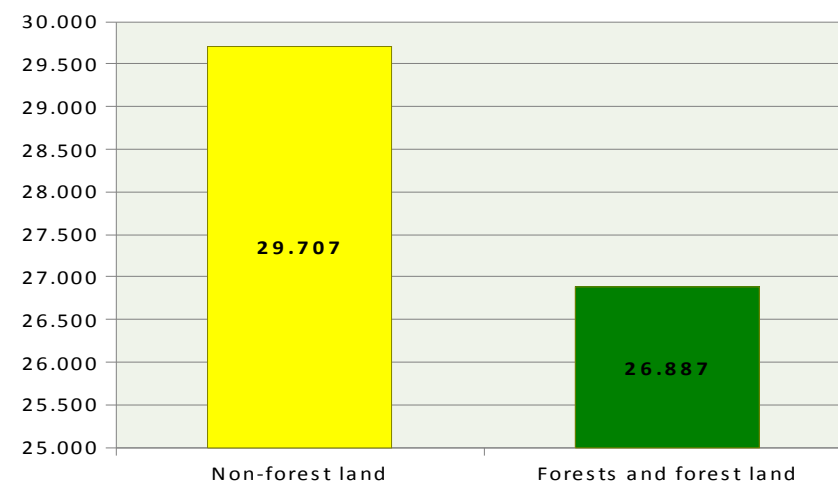
- | | |
|--|-----|
| 1. Pannonian Plain (predominantly lowland area in the north) | 55% |
| 2. Dinaric Alps (montane-alpine belt) | 14% |
| 3. European Mediterranean (littoral area) | 31% |



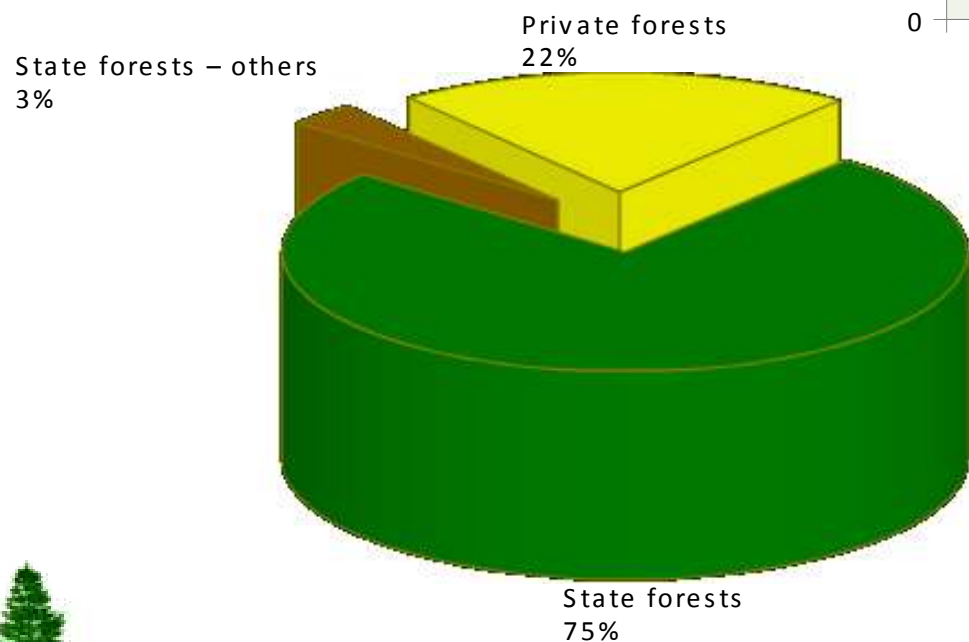
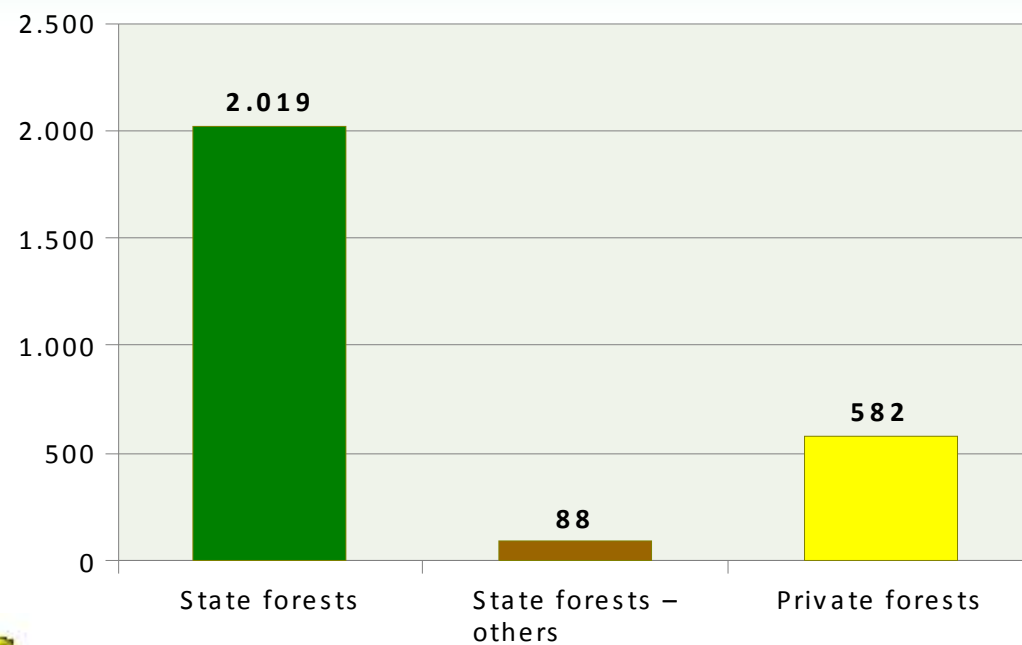
2. Forests and Forestry of Croatia

Forests of Croatia

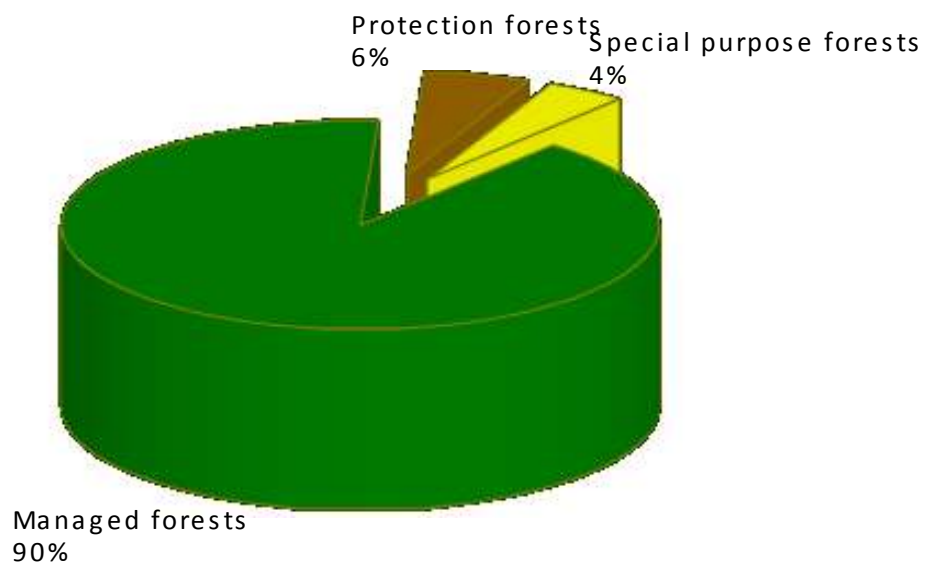
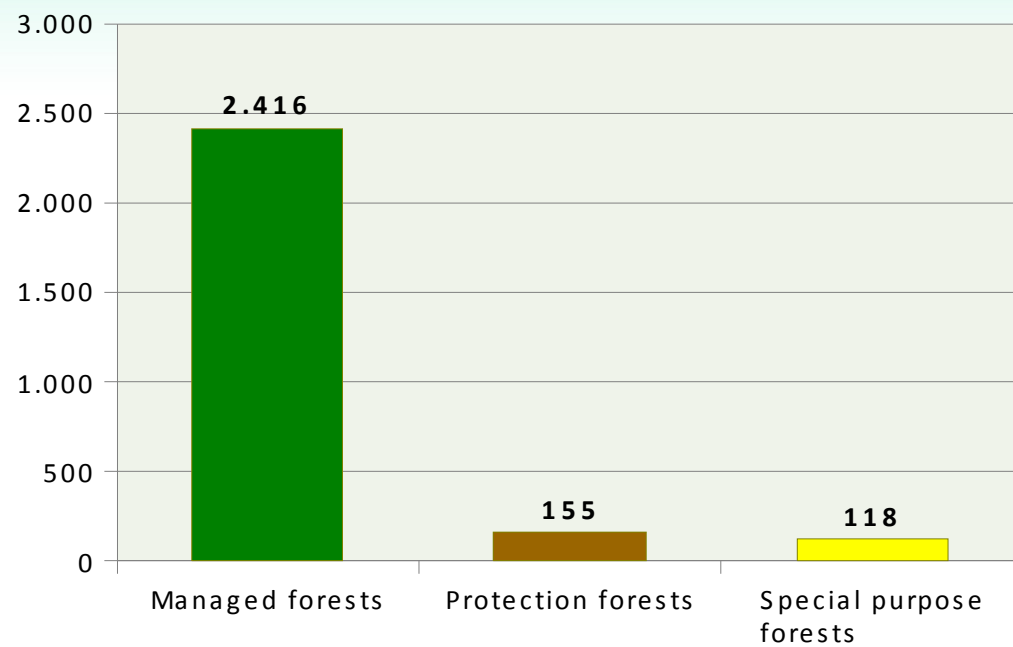
<u>Distribution of forests and forest land</u>	km ²	%
Land area of Croatia	56.594	100%
Non-forest land	29.707	52%
Forests and forest land	26.887	48%
Stocked	24.028	42%
State forests	21.069	37%
Forests owned by HŠ	20.189	36%



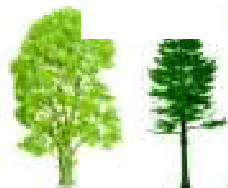
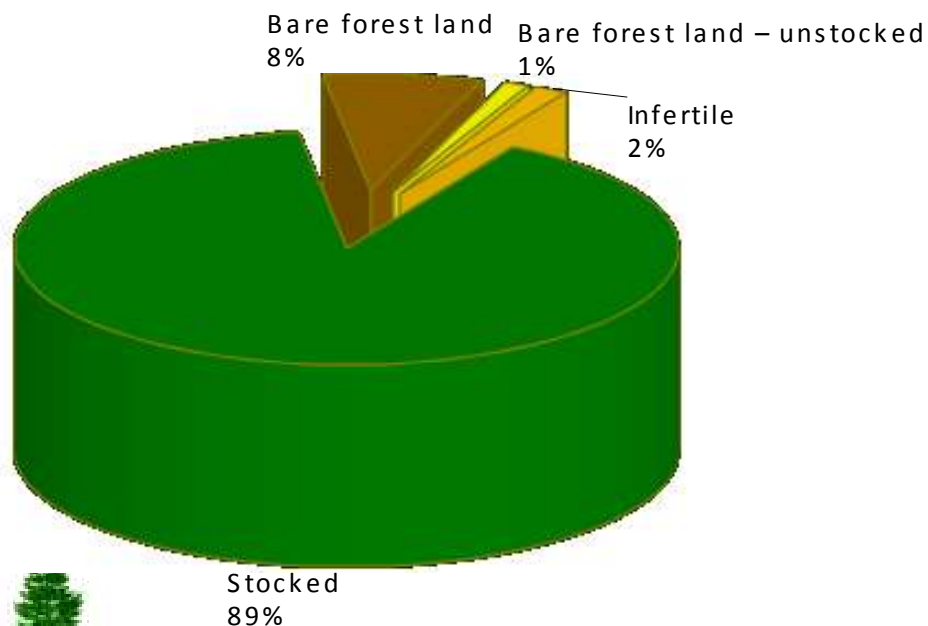
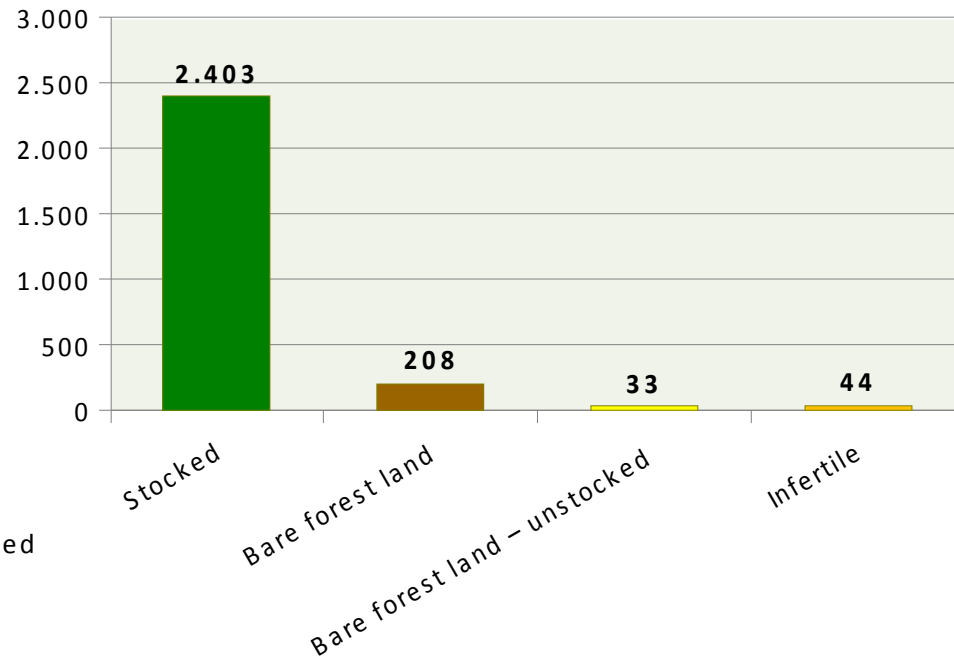
Forests by ownership	thou.ha	%
State forests	2.019	75%
State forests – others	88	3%
Private forests	582	22%
Total	2.689	100%



Forests by purpose	thou.ha	%
Managed forests	2.416	90%
Protection forests	155	6%
Special purpose forests	118	4%
Total	2.689	100%



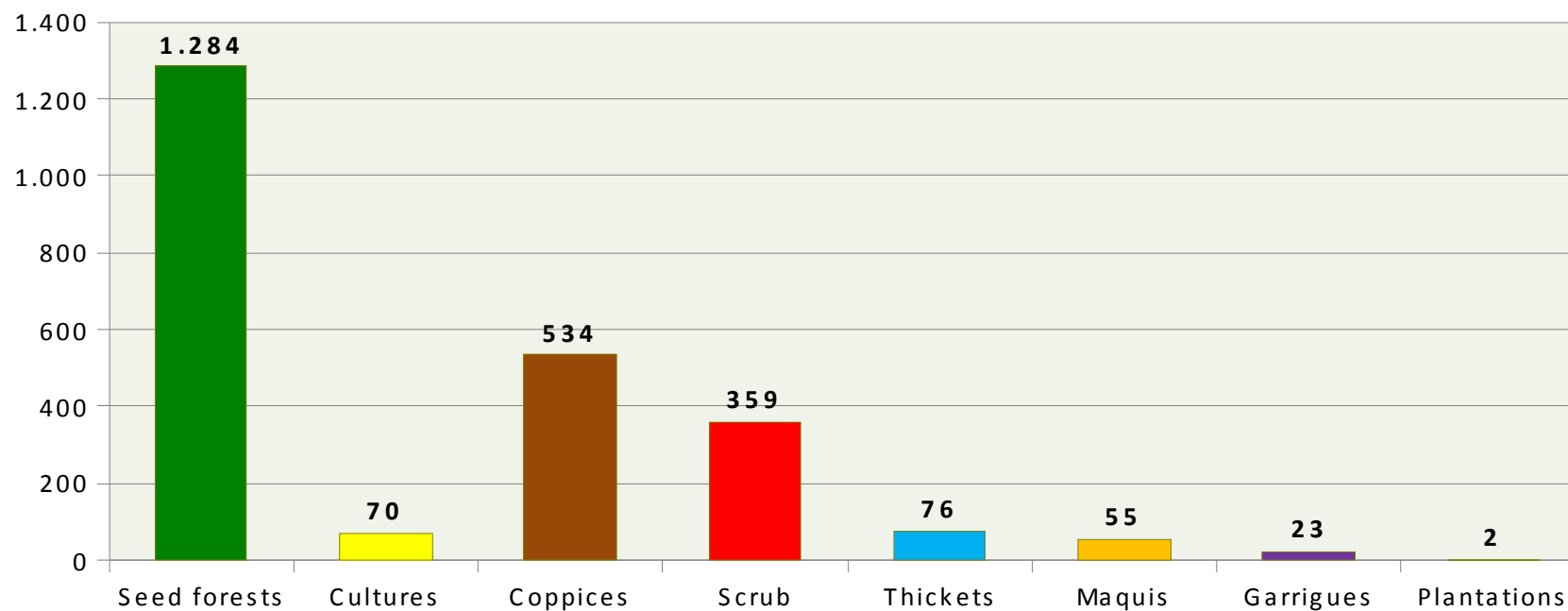
Forests by stocking categories	thou.ha	%
Stocked	2.403	89%
Bare forest land	208	8%
neobraslo neproizvodno	33	1%
neplodno	44	2%
ukupno	2.689	100%



Pattern of stocked areas

tis.ha

Namjena	Seed forests	Cultures	Coppices	Scrub	Thickets	Maquis	Garrigues	Plantations	Ukupno
Managed forests	1.161	60	500	308	71	48	19	2	2.169
Protection forests	47	6	29	37	4	5	3	0	131
Special purpose forests	76	4	5	15	0	2	1	0	103
ukupno	1.284	70	534	359	76	55	23	2	2.403



FORESTS OF CROATIA

260 autochthonous woody forest species
50 managed species

Vegetation zones

I. Mediterranean region

- a) Mediterranean-littoral vegetation belt
- b) Mediterranean-montane vegetation belt

II. Euro-Siberian – North American forest region

- a) European planar vegetation belt
- b) European colline vegetation belt
- c) European montane vegetation belt
- d) European altimontane vegetation belt
- e) European-subalpine vegetation belt
- f) European adalpine vegetation belt



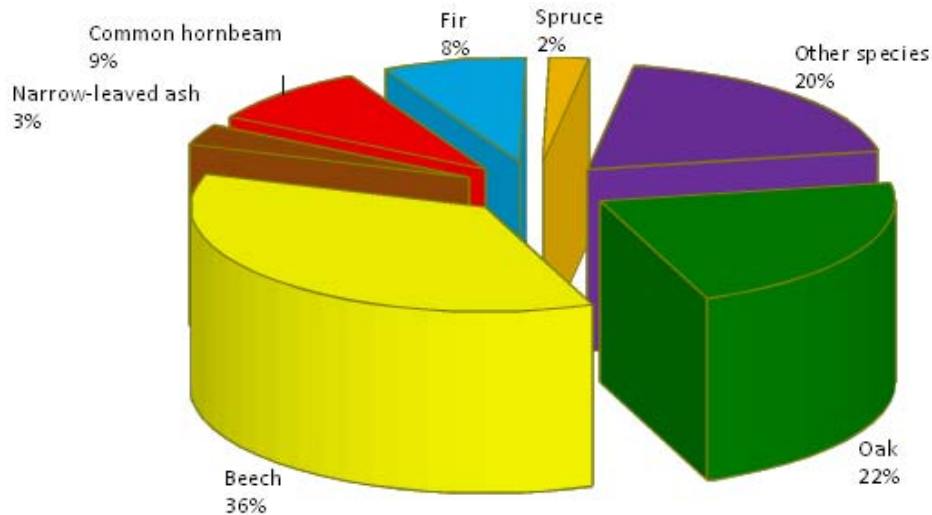
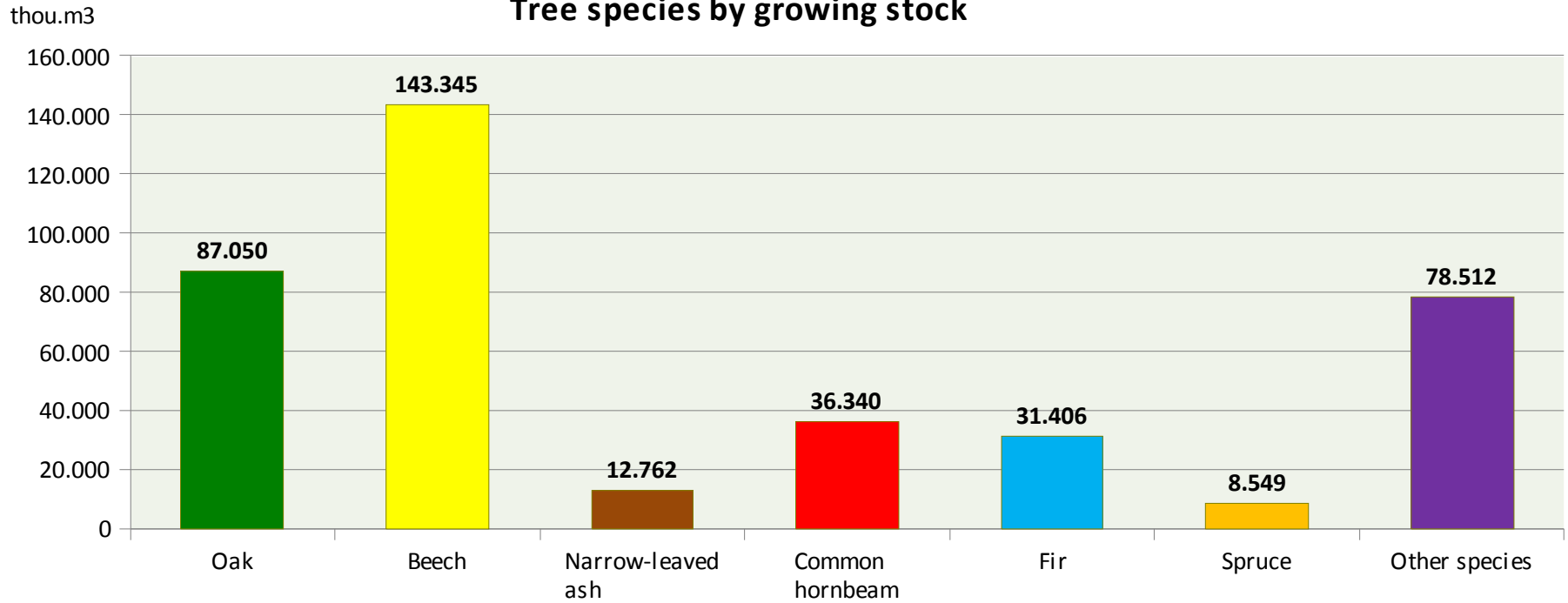
Total forest quantity

thou.m³

Tree species	Regular forests		Selection forests		Total		Proportion	
	drvna zaliha	prirast	drvna zaliha	prirast	drvna zaliha	prirast	drvna zaliha	prirast
Pedunculate oak	48.630	1.106	10	0	48.640	1.106	12%	11%
Sessile oak	38.242	942	168	5	38.410	947	10%	9%
Oak	86.872	2.048	177	5	87.050	2.053	22%	20%
Beech	94.293	2.529	49.052	1.080	143.345	3.608	36%	34%
Narrow-leaved ash	12.762	405			12.762	405	3%	4%
Common hornbeam	36.257	1.084	83	3	36.340	1.087	9%	10%
Fir	457	13	30.949	553	31.406	565	8%	5%
Spruce	1.921	111	6.628	131	8.549	242	2%	2%
Other species	72.933	2.410	5.578	156	78.512	2.566	20%	24%
Total	305.496	8.598	92.467	1.928	397.963	10.526	100%	100%

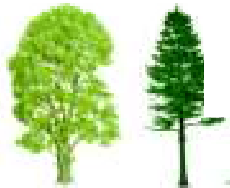
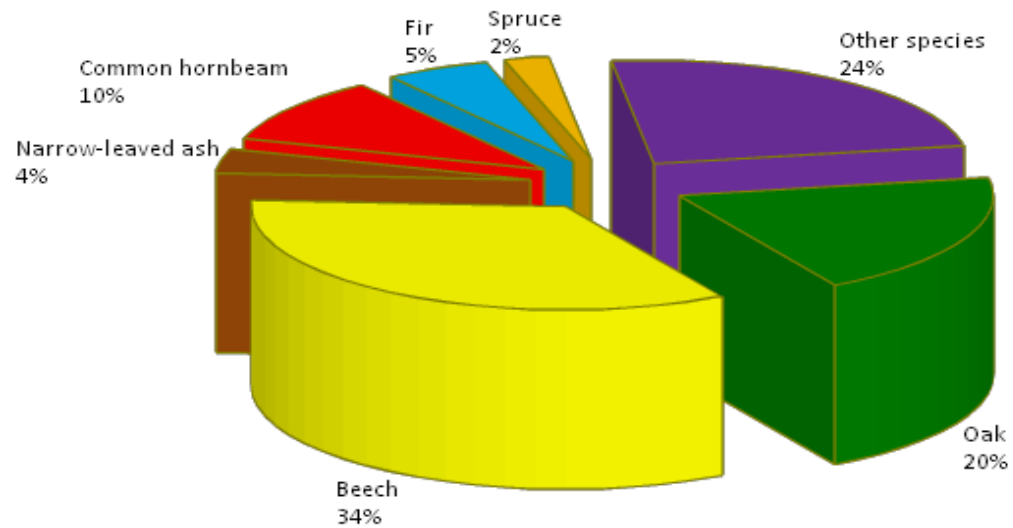
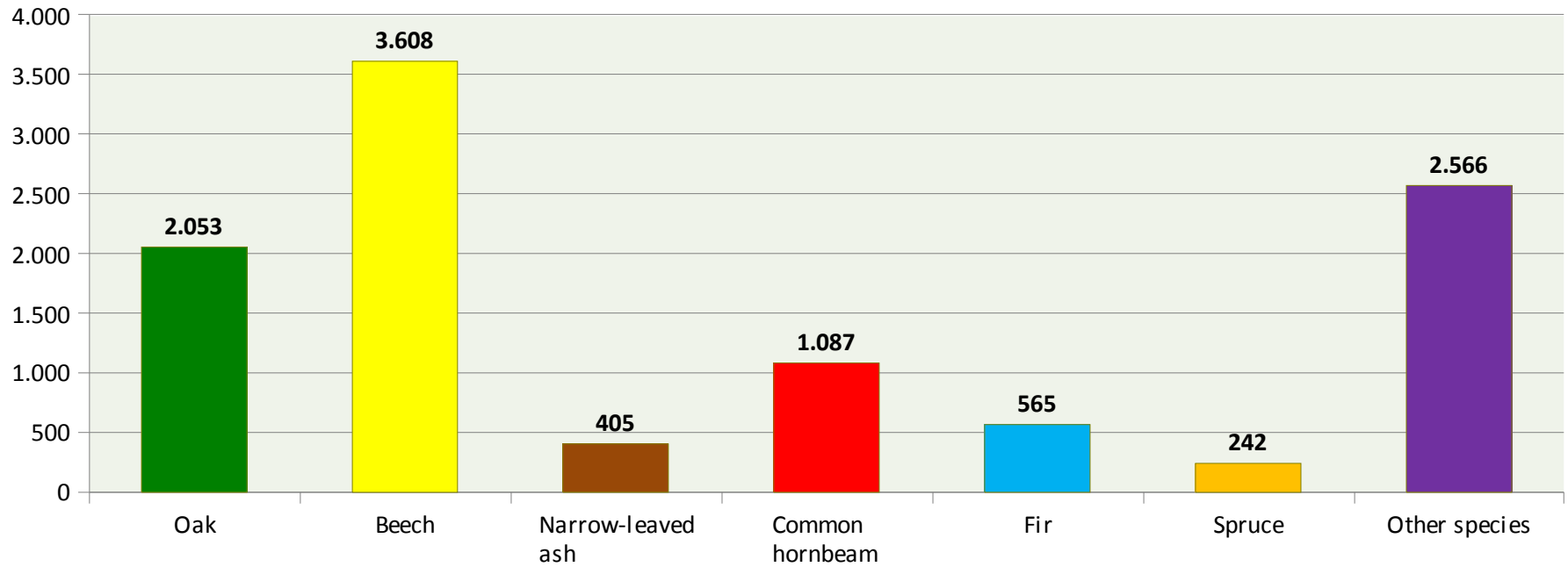


Tree species by growing stock



Tree species by increment

thou.m3



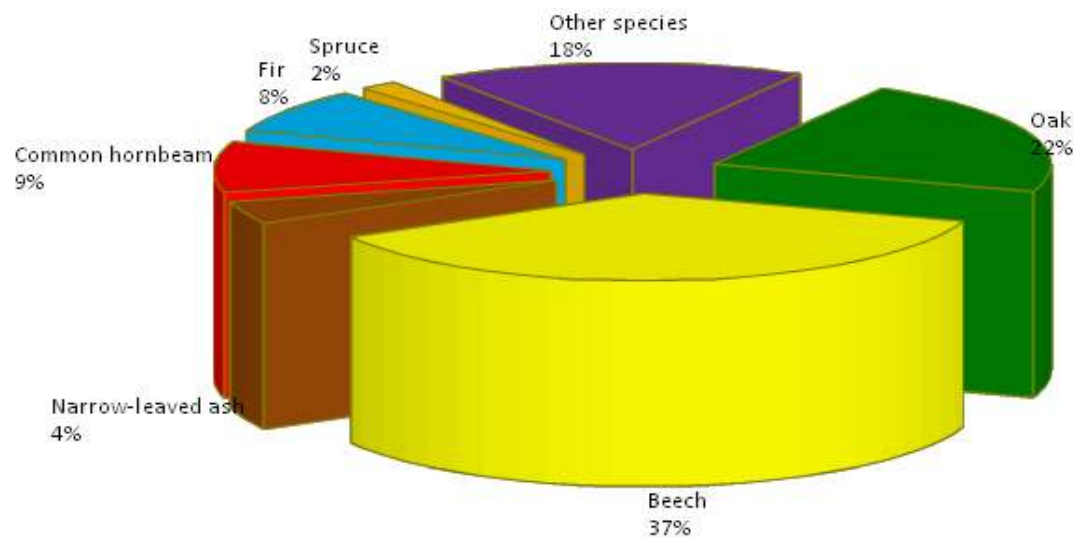
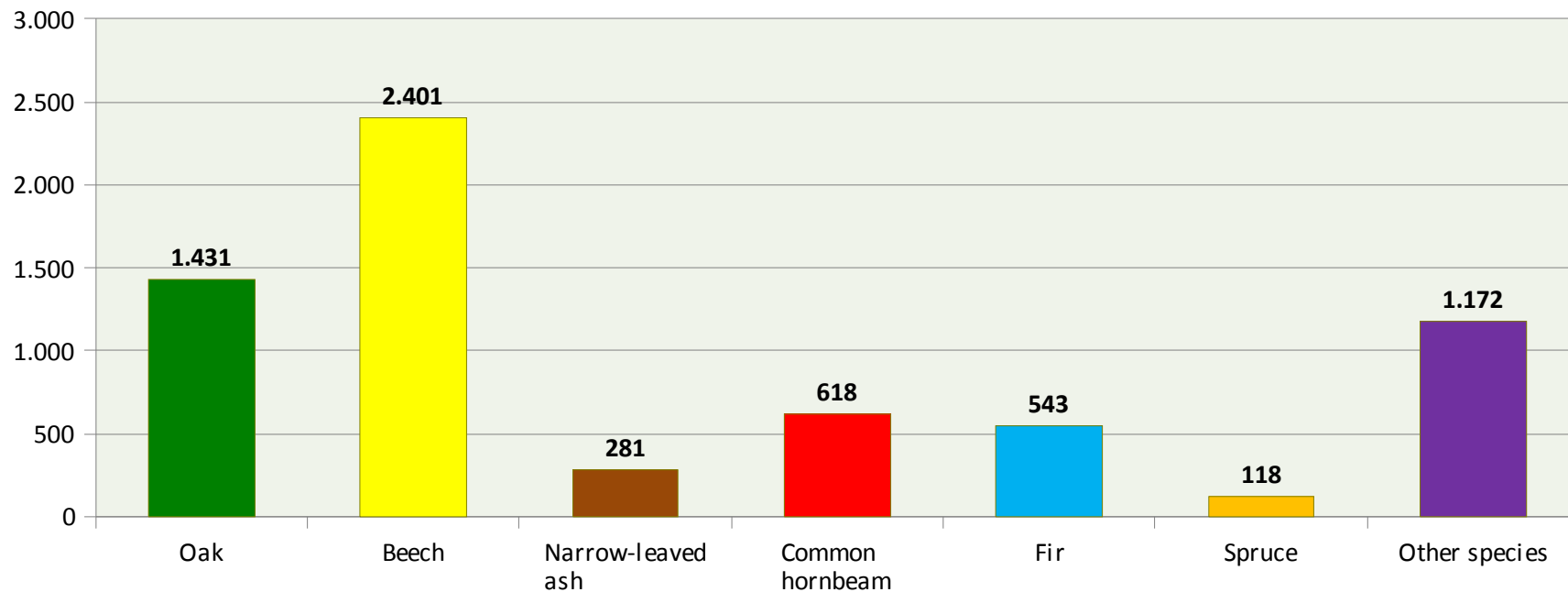
Prescribed annual cut

Tree species	Felling cut		Intermediate cut		Selection cut		Total	
	thou.m ³	Proportion	thou.m ³	Proportion	thou.m ³	Proportion	thou.m ³	Proportion
Pedunculate oak	458	18%	362	13%	0	0%	820	12%
Sessile oak	305	12%	304	11%	2	0%	611	9%
Oak	763	30%	666	25%	2	0%	1.431	22%
Beech	874	35%	854	32%	672	49%	2.401	37%
Narrow-leaved ash	150	6%	131	5%	0	0%	281	4%
Common hornbeam	228	9%	388	14%	1	0%	618	9%
Fir	7	0%	3	0%	533	39%	543	8%
Spruce	8	0%	26	1%	84	6%	118	2%
Other species	483	19%	618	23%	71	5%	1.172	18%
Total	2.514	100%	2.686	100%	1.364	100%	6.564	100%



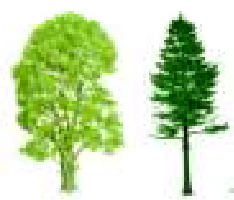
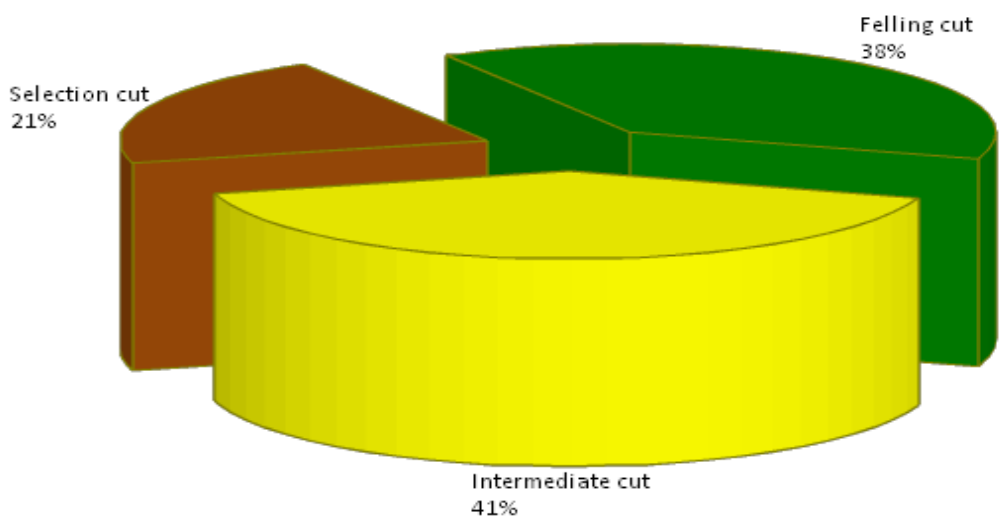
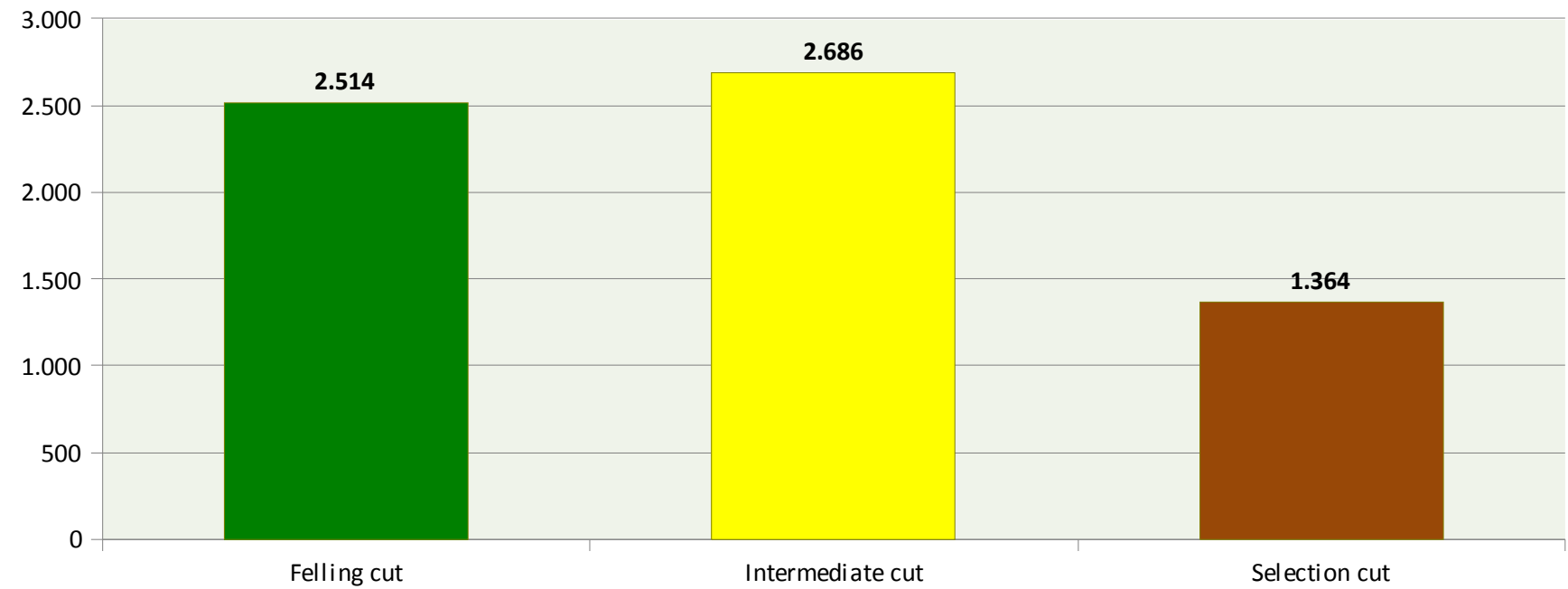
thou.m3

Prescribed annual cut by tree species



thou.m3

Prescribed annual cut by felling type



MINISTRY OF REGIONAL DEVELOPMENT, FORESTRY AND WATER MANAGEMENT

MINISTRY OF CULTURE

COUNTIES

Directorate for Forestry

Directorate for Hunting

Nature Protection Administration

Hrvatske šume d.o.o.
(Croatian Forests Ltd.)

Forest Advisory
Service

Croatian Chamber
of Forestry and Wood
Technology Engineers

National Parks

Special & Strict
Reserves

Management with state
forests and forest land

Management with
private forest

Training and specialization
of certified engineers and
licencing of forest
contractors

Nature Parks

Regional Parks

Faculty of Forestry
Zagreb

Forest Research
Institute

Forestry and wood-
processing schools

Important
Landscapes

Higher Education 3 + 2

Scientific Research

Secondary Education

Croatian Forestry Society



MINISTRY OF REGIONAL DEVELOPMENT, FORESTRY AND WATER MANAGEMENT

Directorate for Budget,
Finances and Accounting

Directorate for Areas
of Special State Concern

Directorate for Regional
and Local Infrastructure

Directorate for
Reconstruction

Directorate for Integrated
Regional Development

Directorate for
Water Management

Directorate for Water
Management and International
Projects

Cabinet of the Minister

Secretariat of the Ministry

Independent Department
for European Integration and
International Cooperation

Independent Department
for Financial Management
and Internal Control

Independent Department
for Internal Audit

Directorate for Forestry

Directorate for Hunting

Directorate for Wood
industry



Assembly

Supervisory Board

Directorate

Management Board

Control and Internal Revision

Production

Commercial dpt.

Planning and Analysis

Development

Forest Management

Ecology

Hunting

Legal, Personnel and General Services

Property Rights

Safety at Work

Financial dpt.

Accounting

Supervisory Station for Eco Production

IT Department

Tourist Agency "Hrvatske šume Tours"

Public Procurement

PWF Programme

Human Resources

Forest Administration (1-16)

Head Office

Production

Commercial

Planning and Analysis

Forest Management

Ecology

Hunting

Legal, Personnel and General Services

Financial and Accounting

IT

Forest Office (1 - 169)

Working Unit (1-23)

Companies in HŠ ownership

Ambalaža d.o.o. Lanišće

Drvena galanterija d.o.o. Vrbovsko

Kamenolomi Krašić d.o.o.

Šumska biomasa d.o.o.

Hrvatske šume Consult d.o.o.

Rasadnik Piket d.o.o. Donji Zemunik



CROATIAN CHAMBER OF FORESTRY AND WOOD TECHNOLOGY ENGINEERS

Chamber Assembly

Class of Forestry Engineers - 5 members

Class of Wood Technology Eng. - 5 members

Supervisory Board

5 members

Chamber Council

President of the Chamber

President of Forestry Engineers Class

President of the Wood Engineers Class

Boards

Registration Board

Licencing Board

Examination Board

Professional Training Board



FACULTY OF FORESTRY, UNIVERSITY OF ZAGREB

Dean's Office

Secretariat

Financial Accounting Department

Institutes

Forestry Department

Department of Ecology and Silviculture

Department of Forest Management

Department of Forest Techniques and Technologies

Department of Forest Genetics, Dendrology and Botanics

Department of Forest Protection and Hunting

Department of Educational-Experimental Forest Sites:
NPŠO Zagreb, NPŠO Lipovljani, NPŠO Zalesina, NPŠO Velika, NPŠO Rab

Wood Technology Department

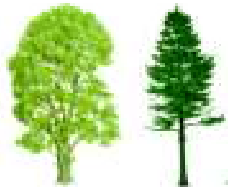
Department of Wood Science

Department of the Organization of Production

Department of Technology of Materials

Furniture and Wood Products Department

Department of Process Techniques



CROATIAN FOREST RESEARCH INSTITUTE

Department of Common Affairs

Department of Laboratory Research

Scientific Departments

Production Services Department

Research Centres

Department of Nursery Production

Department of International Scientific
Cooperation of South-East Europe - EFISEE

Department of Genetics, Forest Tree
Improvement and Seed Husbandry

Department of Forest Technologies and Management

Department of Forest Management
and Forest Economics

Department of Forest Ecology

Department of Silviculture

Department of Forest Protection and Hunting

Low and Forests Centre

„Josip Šafar“ Mountain Forest Centre

Sub-Mediterranean Forest Centre

„Inis Breš“ Centre for Non-Market
Forest Goods and Services

Centre for Urban and Private Forests





CROATIAN FORESTRY SOCIETY

Assembly

President

Supervisory Board

Managing Board

Secretary

Administrative & Accounting

BRANCH OFFICES...

BJELOVAR

BUZET

DELNICE

GOSPIĆ

KARLOVAC

KOPRIVNICA

NAŠICE

NOVA GRADIŠKA

OGULIN

OSIJEK

POŽEGA

SENJ

SISAK

SLAVONSKI BROD

SPLIT

VARAŽDIN

VINKOVCI

VIROVITICA

ZAGREB

PRO SILVA SECTION

BIOMAS SECTION

FOREST PROTECTION SECTION

ECOLOGICAL SECTION

CULTURE, SPORTS AND RECREATION



Thank you
for your attention!

